

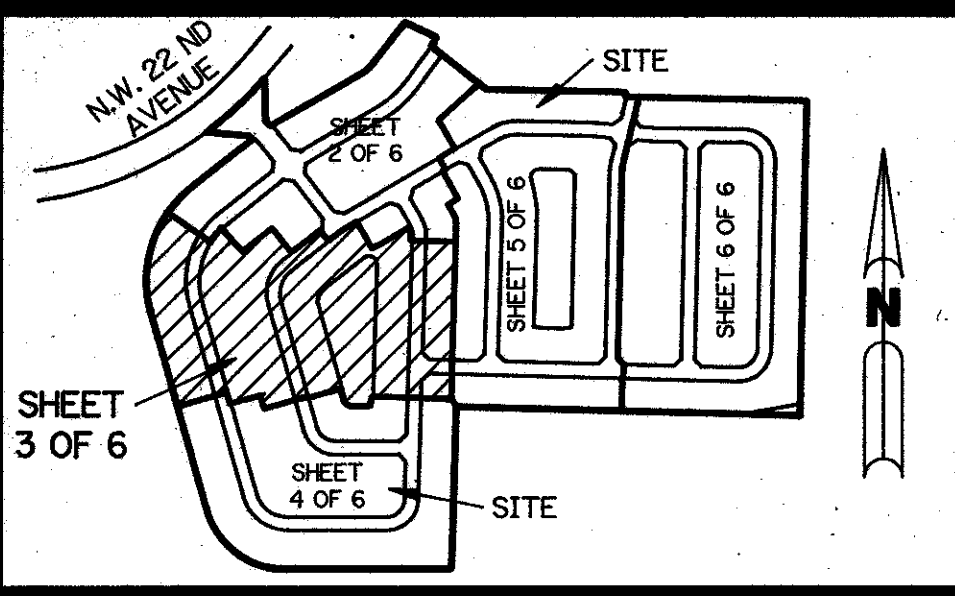
(A P.U.D.)

RAINBOW LAKES - TRACT "A"

A REPLAT OF A PORTION OF TRACT "A" ACCORDING TO THE PLAT OF TARTAN LAKES PLAT NO. 3 - P.U.D. AS RECORDED IN PLAT BOOK 51, PAGES 170 THROUGH 174 INCLUSIVE, OF THE PUBLIC RECORDS OF PALM BEACH COUNTY, FLORIDA. SECTIONS 14 AND 23, TOWNSHIP 45 SOUTH, RANGE 42 EAST

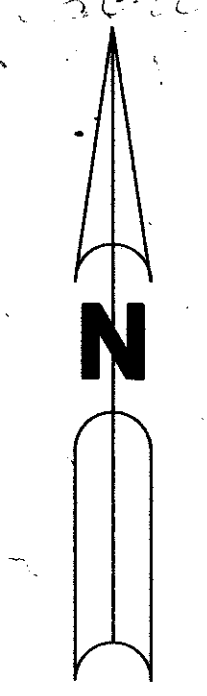
SHEET 3 OF 6

MAY, 1989

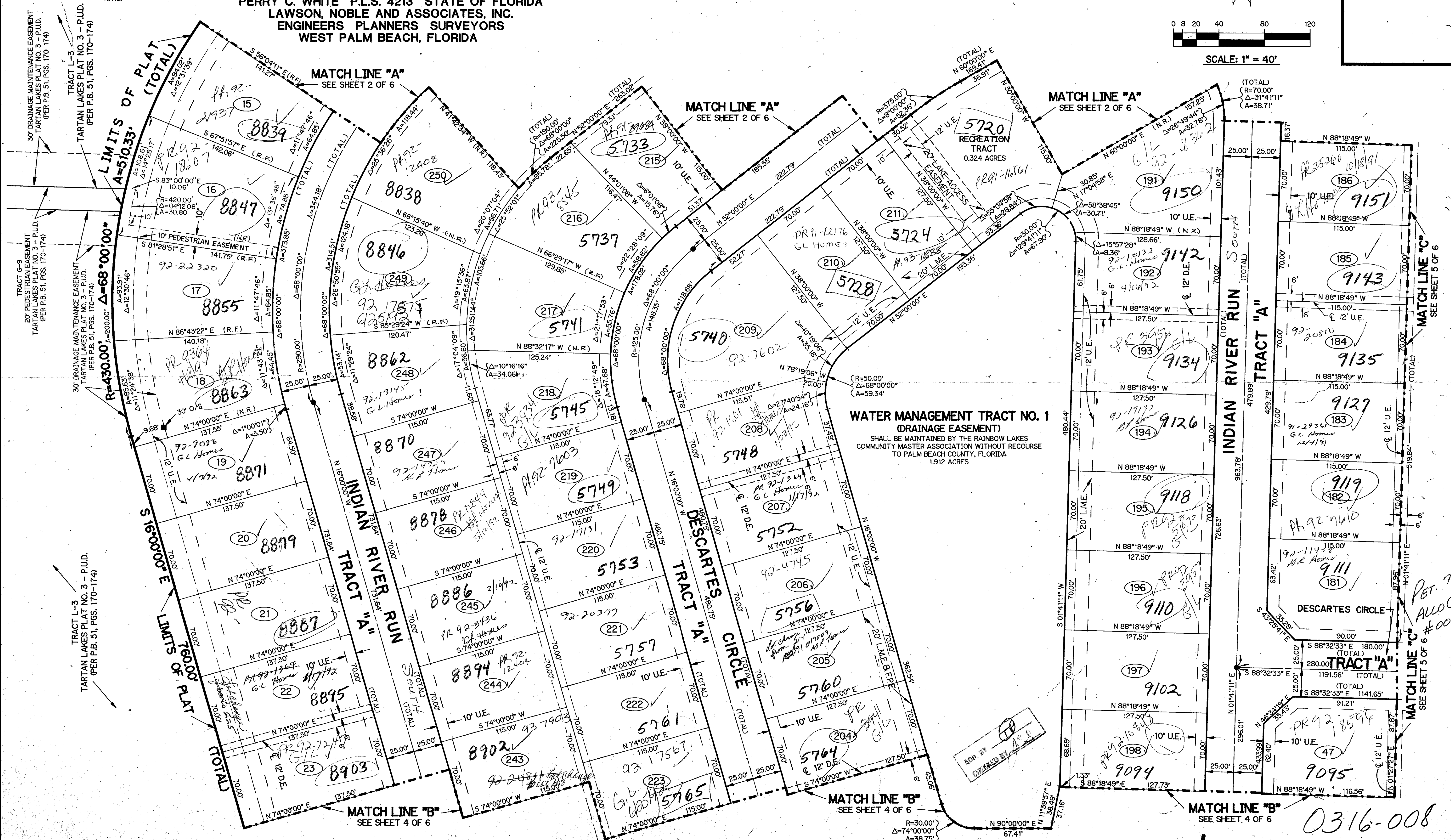


KEY MAP N.T.S.

THIS INSTRUMENT PREPARED BY
PERRY C. WHITE P.L.S. 4213 STATE OF FLORIDA
LAWSON, NOBLE AND ASSOCIATES, INC.
ENGINEERS PLANNERS SURVEYORS
WEST PALM BEACH, FLORIDA



SCALE: 1" = 40'



SUBDIVISION * Rainbow Lakes Tract "A" *
BOOK 64 PAGE 115
FILED CODE D FLOOD MAP # 190B
COAD # 14-34 ZONING RT3
SU 30-173
RID CODE 37437
RID NAME P.I. 1 (1600)
1/13/89

TAZ 441

PET. 79-1
ALLOCATION
#0001

0316-008

RAINBOW LAKES - TRACT "A" 64/115